

INSULATE
SEAL
PROTECT



CROSS-LINKED POLYOLEFIN CABLE BREAKOUT BOOTS

Heat Shrink Boots seal and protect multi-conductor cable and conduit breakouts

FEATURES AND BENEFITS

- Shrink ratio accommodates a wide range of cables
- Flame retardant
- Boots for 2, 3 and 4 way cable breakouts
- Strain relief and mechanical protection
- Thermoplastic adhesive liner provides complete environmental protection and insulation
- Continuous operating temperature: -55°C to 100°C
- Shrink temperature: 135°C

STANDARDS

- Meets ESI 09-11

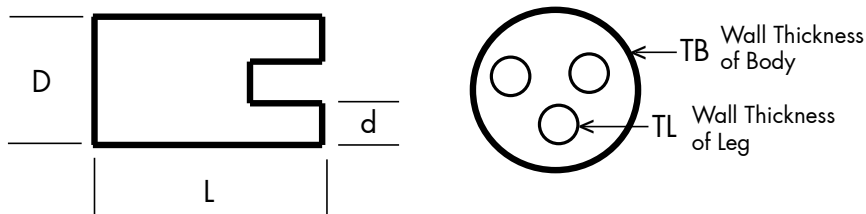
TYPICAL APPLICATIONS

- Strain relief for multi-core cables
- Moisture sealing and environmental protection



DIMENSIONS

ORDER NUMBER	LEG	EXPANDED				RECOVERED						APPLICATION LEGS 600 V CONDUCTOR				
		DIAMETER (MIN.) D		DIAMETER (MIN.) d		DIAMETER (MAX.) D		DIAMETER (MAX.) d		LENGTH (NOM.) L				WALL THICKNESS OF BODY (NOM.) TB		WALL THICKNESS OF LEG (NOM.) TL
	NO	MM	IN	MM	IN	MM	IN	MM	IN	MM	IN	MM	IN	MM	IN	AWG/MCM
0120	2	30.0	1.18	15.0	0.59	9.4	0.37	4.10	0.16	94.0	3.70	1.5	0.06	1.2	0.05	#10 - 2/0
0200	2	50.0	1.97	21.0	0.83	22.9	0.90	7.60	0.30	119.0	4.69	3.2	0.13	3.2	0.13	#3 - 300
0340	2	87.0	3.43	43.0	1.69	38.1	1.50	12.70	0.50	141.5	5.57	3.8	0.15	3.8	0.15	3/0 - 1000
0100	3	25.0	0.98	9.0	0.35	9.1	0.36	3.00	0.12	76.5	3.01	2.5	0.10	2.5	0.10	#12 - #4
0150	3	38.1	1.50	16.5	0.65	12.7	0.50	4.00	0.16	113.5	4.47	2.9	0.11	2.9	0.11	#8 - 3/0
0170	3	43.2	1.70	20.8	0.82	22.9	0.90	7.60	0.30	99.0	3.90	3.8	0.15	3.8	0.15	#3 - 300
0220	3	55.8	2.20	30.4	1.20	22.5	0.89	9.00	0.35	180.0	7.09	3.0	0.12	2.0	0.12	#1 - 600
0240	3	61.0	2.40	31.8	1.25	35.6	1.40	12.60	0.50	144.5	5.69	3.8	0.15	3.8	0.15	3/0 - 750
0280	3	72.0	2.83	37.0	1.46	35.0	1.38	17.50	0.69	178.0	7.01	4.0	0.16	3.0	0.12	300 - 1000
0350	3	90.0	3.54	35.0	1.38	34.0	1.34	14.00	0.55	200.0	7.87	3.0	0.12	2.0	0.08	4/0 - 1000
0430	3	110.0	4.33	40.0	1.57	35.0	1.38	17.50	0.69	178.0	7.01	4.0	0.16	3.0	0.12	300 - 1000
0490	3	125.0	4.92	50.8	2.00	59.0	2.32	25.40	1.00	283.0	11.14	3.8	0.15	3.8	0.15	750 - 1000
0140	4	35.0	1.38	15.0	0.59	12.0	0.47	3.00	0.12	95.0	3.74	2.5	0.10	2.0	0.08	#12 - 2/0
0190	4	47.4	1.87	21.5	0.85	22.9	0.90	6.40	0.25	165.1	6.50	4.1	0.16	3.3	0.13	#6 - 350
0240	4	60.0	2.36	30.0	1.18	22.9	0.90	6.40	0.25	202.0	7.95	4.1	0.16	3.3	0.13	#4 - 600
0310	4	78.7	3.10	38.1	1.50	35.6	1.40	12.50	0.49	240.0	9.45	3.3	0.13	3.3	0.13	3/0 - 1000
0520	4	133.4	5.25	34.3	1.35	76.2	3.00	14.00	0.55	254.4	10.02	4.1	0.13	4.1	0.16	4/0 - 1000



ORDERING

- Select a dimension which will shrink snugly over the component to be covered. If recovery is restricted the resultant wall thickness will be less than specified.
- Select options:
 - Legs: 2, 3 or 4
 - Printing: Printed or Unprinted
 - Adhesive Lining: Lined (D) or Unlined (U)
- Please specify the product name, order reference number and options you require
- Order example: CCB, 0120, 2 legs, black, unprinted, unlined

Please contact your Customer Service Representative for information on custom colours, sizes, lengths and material data sheet.

All information contained in this data sheet is believed to be reliable. We advise, however, that customers should separately evaluate the suitability of our products for their particular application. DSG-Canusa and ShawCor give no guarantees in respect of the accuracy or sufficiency of the information presented and disclaim any liability regarding its use. Our responsibilities are only those listed in our Standard Terms and Conditions of Sale for these products. In no instance will we be liable for any eventual, indirect or consequential damage or damages arising from the sale, resale, transfer, use or misuse of the product.